



ASSOCIATION DE SPORTS RATIERS



RULES - Addendum New Games

13	GENERAL RULES	5
13.1	Titles.....	5
14	Rat-Mouflage	7
14.1	Site Specifics.....	7
14.2	Site specificities according to skill levels.....	7
14.2.1	Novice	7
14.2.2	Advanced.....	7
14.2.3	Expert	8
14.2.4	Champion	9
14.3	Regulations for all levels	10
14.3.1	Start box.....	10
14.3.2	Enclosure fence	10
14.3.3	Tubes and objects	10
14.3.4	Eligible dogs	10
14.3.5	Entering the ring	10
14.3.6	Praise and rewards.....	10
14.3.7	Identifying the location of the rat(s).....	10
14.3.8	Exiting the ring	11
14.4	Scoring parameters for all levels.....	11
14.4.1	Qualifying score	11
14.4.2	Non-qualifying score	12
14.4.3	Disqualification	12
15	Rat-Byrinthe	14
15.1	Site Specifics.....	14
15.2	Site specificities according to skill levels.....	14
15.2.1	Novice	14
15.2.2	Advanced.....	14
15.2.3	Expert	15
15.2.4	Champion	16
15.3	Regulations for all levels	17

15.3.1	Start box	17
15.3.2	Enclosure fence	17
15.3.3	Tubes and objects	17
15.3.4	Eligible dogs	17
15.3.5	Entering the ring	17
15.3.6	Praise and rewards.....	17
15.3.7	Identifying the location of the rat(s).....	18
15.3.8	Exiting the ring	19
15.4	Scoring parameters for all levels.....	19
15.4.1	Qualifying score	19
15.4.2	Non-qualifying score	20
15.4.3	Disqualification	20
16	Rat-Haut	21
16.1	Site Specifics.....	21
16.2	Site specificities according to skill levels.....	21
16.2.1	Novice	21
16.2.2	Advanced.....	22
16.2.3	Expert.....	22
16.2.4	Champion.....	23
16.2.5	Excellent.....	24
16.3	Regulations for all levels	25
16.3.1	Start box	25
16.3.2	Enclosure fence.....	25
16.3.3	Tubes and objects	25
16.3.4	Eligible dogs	25
16.3.5	Entering the ring	25
16.3.6	Praise and rewards.....	25
16.3.7	Identifying the location of the rat(s).....	25
16.3.8	Exiting the ring	26
16.4	Scoring parameters for all levels.....	26
16.4.1	Qualifying score	26
16.4.2	Non-qualifying score	27

16.4.3	Disqualification	27
--------	------------------------	----



Note: The games listed below will take effect as of April 1, 2025. These rules will be incorporated into the official rulebook during their annual revision at the end of the year.

13 GENERAL RULES

13.1 Titles

Ribbons and/or rosettes will be given for qualifying scores and titles. A certificate will be given by the ASR for each title obtained.

NOVICE RAT-MOUFLAGE NOVICE TITLE: 120 points in Novice level
RMno

ADVANCED RAT-MOUFLAGE TITLE: 200 points in Advanced level
RMav

EXPERT RAT-MOUFLAGE TITLE: 300 points in Expert level
RMex

CHAMPION RAT-MOUFLAGE TITLE: 420 points in Champion level
RMch

CHAMPION BRONZE RAT-MOUFLAGE TITLE: 620 points in Champion level
RMchBr

CHAMPION SILVER RAT-MOUFLAGE TITLE : 820 points in Champion level
RMchAr

CHAMPION GOLD RAT-MOUFLAGE TITLE : 1020 points in Champion level
RMchOr

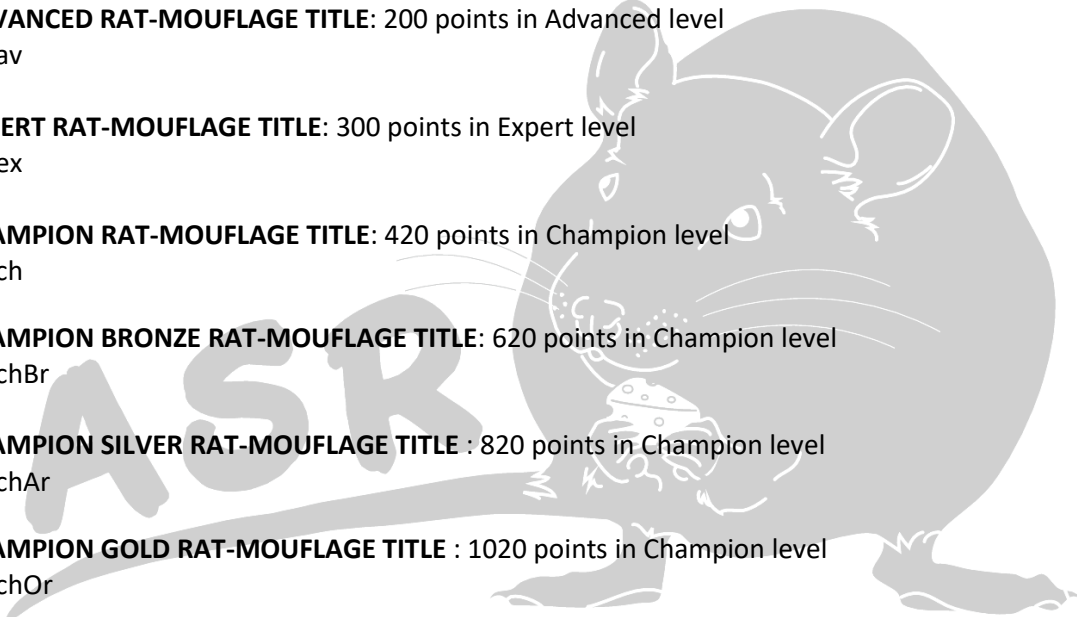
NOVICE RAT- BYRINTHE NOVICE TITLE: 120 points in Novice level
RBno

ADVANCED RAT- BYRINTHE TITLE: 200 points in Advanced level
RBav

EXPERT RAT- BYRINTHE TITLE: 300 points in Expert level
RBex

CHAMPION RAT- BYRINTHE TITLE: 420 points in Champion level
RBch

CHAMPION BRONZE RAT- BYRINTHE TITLE: 620 points in Champion level
RBchBr



CHAMPION SILVER RAT- BYRINTHE TITLE: 820 points in Champion level
RBchAr

CHAMPION GOLD RAT- BYRINTHE TITLE: 1020 points in Champion level
RBchOr

NOVICE RAT- HAUT NOVICE TITLE: 300 points in Novice level
RHno

ADVANCED RAT- HAUT TITLE: 400 points in Advanced level
RHav

EXPERT RAT- HAUT TITLE: 400 points in Expert level
RHex

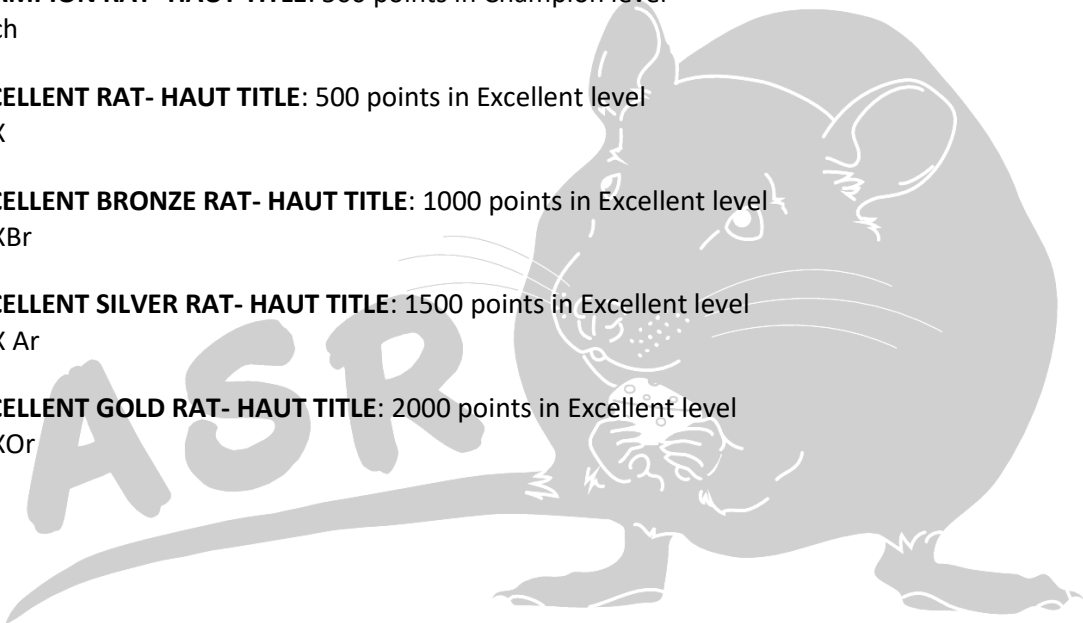
CHAMPION RAT- HAUT TITLE: 500 points in Champion level
RHch

EXCELLENT RAT- HAUT TITLE: 500 points in Excellent level
RHX

EXCELLENT BRONZE RAT- HAUT TITLE: 1000 points in Excellent level
RHXBr

EXCELLENT SILVER RAT- HAUT TITLE: 1500 points in Excellent level
RHX Ar

EXCELLENT GOLD RAT- HAUT TITLE: 2000 points in Excellent level
RHXOr



14 Rat-Mouflage

The dog must find the rat(s) hidden under fabric within a set amount of time.

The challenge for the dog is visual, as all objects and tubes look alike and are hidden under fabric. Therefore, the dog cannot identify the tubes visually and must use its nose.

14.1 Site Specifics

The Rat-Mouflage trial may take place indoors or outdoors under shelter. In both cases, no hay bales will be used.

14.2 Site specificities according to skill levels

14.2.1 Novice

14.2.1.1 Construction parameters

14.2.1.1.1 Enclosure dimensions (interior and exterior)

- 300 square feet
- Minimum of 10 feet in width

14.2.1.1.2 Equipment and materials

- 4 tubes
- 11 miscellaneous
 - Objects (must be cylindrical to simulate tubes, e.g., 2-liter bottles, paper towel rolls, rolled towels, etc.)
- Fabric to cover objects (blankets, scarves, towels, soft-handled bags, etc.)

14.2.1.2 Sex and quantity of rats

- 1 rat, male and/or female will be used. However, the choice of sex must remain the same throughout the competition to ensure fairplay to all competitors.

14.2.1.3 Placement of tube

- A total of 4 tubes will be used; one will contain the rat, the others will be clean and empty.
- All 15 objects (including the tubes) must be placed on the ground and scattered within the enclosure.
 - A covered tube/object is considered one object.

14.2.2 Advanced

14.2.2.1 Construction parameters

14.2.2.1.1 Enclosure dimensions (interior and exterior)

- 400 square feet
- Minimum of 10 feet in width

14.2.2.1.2 Equipment and materials

- 6 tubes
- 16 miscellaneous objects

- Objects (must be cylindrical to simulate tubes, e.g., 2-liter bottles, paper towel rolls, rolled towels, etc.)
- Fabric to cover objects (blankets, scarves, towels, soft-handled bags, etc.)
- 3 judge-selected toys
 - Toys must not squeak

14.2.2.2 Sex and quantity of rats

- 1 rat, male and/or female will be used. However, the choice of sex must remain the same throughout the competition to ensure fairplay to all competitors.

14.2.2.3 Placement of tube

- A total of 6 tubes will be used; one will contain the rat, three will have litter, the others will be clean and empty.
- All 25 objects (including tubes and toys) must be placed on the ground and scattered within the enclosure.
 - A covered tube/object is considered one object.
 - Toys must be visible (not covered).

14.2.3 Expert

14.2.3.1 Construction parameters

14.2.3.1.1 Enclosure dimensions (interior and exterior)

- 400 square feet
- Minimum of 10 feet in width

14.2.3.1.2 Equipment and materials

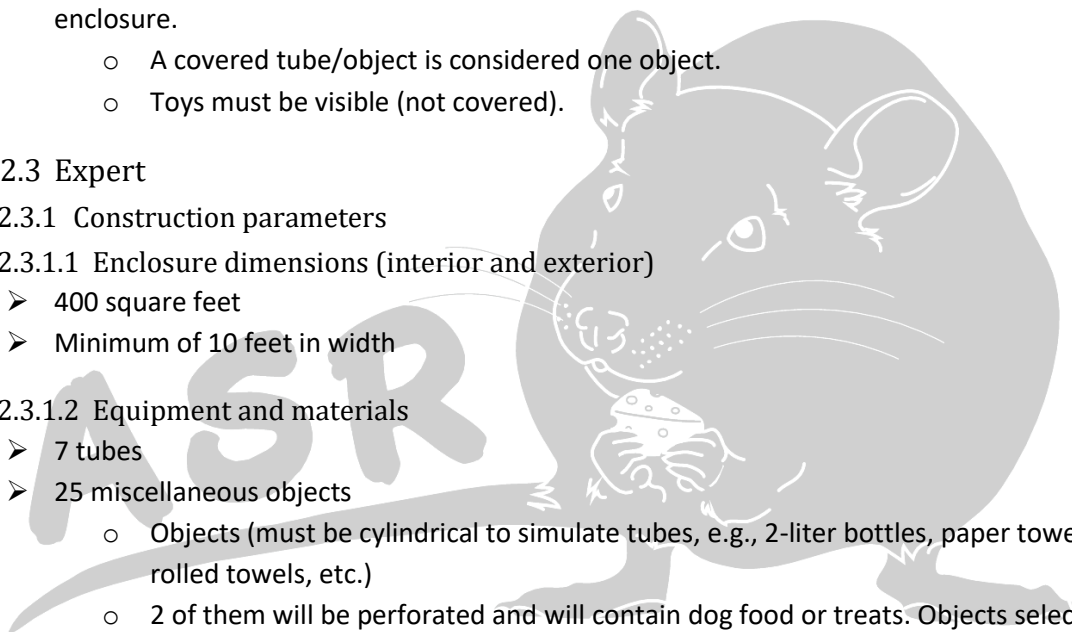
- 7 tubes
- 25 miscellaneous objects
 - Objects (must be cylindrical to simulate tubes, e.g., 2-liter bottles, paper towel rolls, rolled towels, etc.)
 - 2 of them will be perforated and will contain dog food or treats. Objects selected must not allow the dog to access the food
- Fabric to cover objects (blankets, scarves, towels, soft-handled bags, etc.)
- 3 judge-selected toys
 - Toys must not squeak

14.2.3.2 Sex and quantity of rats

- 2 rats, male and/or female are used. However, the choice of sex must remain the same throughout the competition to ensure fairplay to all competitors.

14.2.3.3 Placement of tube

- A total of 7 tubes will be used; two (2) will contain a rat, four (4) will have litter, one (1) will contain dog food.
- All 35 objects (including tubes and toys) to be placed on the ground or elevated and scattered within the enclosure.



- Maximum object height = 24 inches
- Elevated objects must be secured
- It is permitted to have 2 objects under the same fabric as long as they are completely covered
- No container/tube with food, nor a tube with litter hidden under the same fabric as a tube with rat.
- Fabric alone does not count for one object.
- Toys must be visible (not covered).

14.2.4 Champion

14.2.4.1 Construction parameters

14.2.4.1.1 Enclosure dimensions (interior and exterior)

- 400 square feet
- Minimum of 10 feet in width

14.2.4.1.2 Equipment and materials

- 9 tubes
- 25 miscellaneous objects
 - Objects (must be cylindrical to simulate tubes, e.g., 2-liter bottles, paper towel rolls, rolled towels, etc.)
 - Two (2) of them will be perforated and will contain dog food or treats. Objects selected must not allow dogs to access the food
- Fabric to cover objects (blankets, scarves, towels, soft-handled bags, etc.)
- 6 judge-selected toys
 - Toys may produce noise (squeak)

14.2.4.2 Sex and quantity of rats

- 2 rats, male and/or female will be used. However, the choice of sex must remain the same throughout the competition to ensure fairplay to all competitors.

14.2.4.3 Placement of tube

- A total of 9 tubes are used; two (2) will contain a rat, four (4) will have litter and three (3) will contain human food.
- All 40 objects (including tubes and toys) to be placed on the ground or elevated and scattered within the enclosure.
 - Maximum object height = 24 inches
 - Elevated objects must be secured
 - Possible to have 2 objects under the same fabric as long as they are completely covered
 - No container/tube with food, nor a tube with litter hidden, nor toy under the same fabric as a tube with rat.
 - Fabric alone does not count for one object.
 - Toys can be visible (uncovered) or hidden.

14.3 Regulations for all levels

14.3.1 Start box

14.3.1.1 Placement

- The box must be inside the enclosure, close to the entrance
- No minimum distance is required between the start box and the search area

14.3.1.2 Dimensions

- 4 feet wide by 3 feet deep

14.3.2 Enclosure fence

- Wall or fence of 3 feet height minimum height
- Secured to ground to prevent dog from going under.

14.3.3 Tubes and objects

- Placement of the tube(s) with rat as mentioned in the specifics by levels
- Tubes used can be white, black or painted in different colors
- Tubes with rat must comply with regulation (length/size)
- Same set-up for all teams

14.3.4 Eligible dogs

- As stipulated in the General Rules and Regulations (section 5.2.4).
- Senior and/or disable dogs are welcome, but no additionnal time will be granted for their search and no special accommodations will be made for deaf and/or blind dogs.
- Dogs of all levels can participate in Rat-Mouflage
- In a sanctionned trial, the dog must compete in its current level.
- A competing dog cannot do a For Exhibit Only (FEO) run and a sanctionned run in the same trial.

14.3.5 Entering the ring

- As stipulated in the General Rules and Regulations (section 5.2.5).

14.3.6 Praise and rewards

- Upon confirmation by the judge that the rat has been found, verbal and physical encouragements will be permitted but no treats or toys (other than those placed by the juge) will be tolerated in the enclosure out of respect for the following teams.

14.3.7 Identifying the location of the rat(s)

- The handler is responsible for indicating to the judge that their dog has found the rat by clearly saying "RAT!" and/or raising their hand to stop the timer.
- If the wrong tube is identified or the dog fails to find the rat within the allotted search time, the team must immediately exit the ring.
- The handler may choose to stay on the starting mat without giving any cues to their dog or follow the dog and/or speak, which will incur point penalty.

- Under no circumstances may the handler touch the tubes, any objects, or their dog (except after a rat has been found).
- For levels with more than one rat, the time stops as soon as a rat is found and resumes when the dog is released again.
 - If the dog finds another rat while the time is stopped, that find does not count. The handler must still bring their dog back to the starting box and wait for the judge's OK before releasing the dog to mark the next rat.
 - The handler is allowed to give a new verbal command when releasing the dog.
 - **Any loss of control of the dog while the located rat is being removed from the ring results in automatic disqualification.**
 - When the judge confirms that a rat has been found, the handler must:
 - For the Expert level, catch their dog and return to the starting box to wait while the identified tube is removed from the ring. The handler must wait for the judge's OK before releasing the dog to find the next rat.
 - No time penalty will be given if the handler leaves the box to retrieve their dog after a rat has been found.
 - For the Champion level:
 - If the handler had already left the start box, they must retrieve their dog and return to the box to wait while the identified tube is removed. The handler must wait for the judge's OK before releasing the dog.
 - If the handler remained in the start box (in silence), they must stay there and call their dog back. The dog must return immediately and directly (within approximately 3 seconds).
 - If the handler moves to retrieve the dog, a 35-point movement penalty will be applied.
 - If the dog does not return immediately and/or directly and the handler does not move to retrieve it within 5 seconds, the team will be automatically disqualified.
- Judges may stop and excuse the team in the ring at any time if they believe the safety of the rat(s) and/or the equipment is at risk.
- A judge may be inside the ring if they believe it is the best position for clearly observing the search.

14.3.8 Exiting the ring

- As stipulated in the General Rules and Regulations (section 5.2.8)

14.4 Scoring parameters for all levels

14.4.1 Qualifying score

The team will earn a qualifying score if the total time to find the rat(s), to the satisfaction of the judge, is within the following parameters:

- Novice

- Time: 60 seconds
- Minimum 120 points at the Novice level required to earn the title
- 40 points if the handler stays in the start box without speaking while the dog works at a distance
- 30 points if the handler moves or speaks after the dog leaves the box (10-point penalty)
- **Advanced**
 - Time: 70 seconds
 - Minimum 200 points at the Advanced level is required to earn the title
 - 50 points if the handler stays in the start box without speaking while the dog works at a distance
 - 40 points if the handler moves or speaks after the dog leaves the box (10-point penalty)
- **Expert**
 - Time: 80 seconds
 - Minimum 300 points at the Expert level is required to earn the title
 - 60 points if the handler stays in the start box without speaking while the dog works at a distance
 - 30 points if the handler moves or speaks after the dog leaves the box (30-point penalty)
- **Champion**
 - Time: 90 seconds
 - Minimum 420 points at the Champion level is required to earn the title
 - 70 points if the handler stays in the start box without speaking while the dog works at a distance
 - 35 points if the handler moves or speaks after the dog leaves the box (35-point penalty), including to retrieve the dog after a rat find
- **Bronze, Silver, and Gold**
 - A minimum of 200 additional Champion-level points is required to earn each title. (Bronze = 620 points, Silver = 820 points, and Gold = 1020 points)
 - 50 points if the handler stays in the start box without speaking while the dog works at a distance
 - 25 points if the handler moves or speaks after the dog leaves the box (25-point penalty), including to retrieve the dog after a rat find
- Except for the Champion Bronze, Silver and Gold levels, points do not carry over between levels

14.4.2 Non-qualifying score

- The team exceeds the time allowed to find the location of the rat(s)
- When a wrong tube is identified
- A handler who releases his dog before the judge's authorization (5-second penalty)

14.4.3 Disqualification

- **Handler intentionally allows the dog to shake or damage the tube/setup**
- **Loss of control of the dog while a rat is being removed**
- **Any unsportsmanlike conduct**

- **A dog that relieves itself within the search area.**
- **In Champion level, if the handler does not leave the start box (or takes too long – more than 5 seconds –) to retrieve their dog after a rat has been found, when the dog does not return immediately and directly after being recalled.**



15 Rat-Byrinthe

The dog must find the rat(s) hidden in a maze-like scenario built using fences and barriers. He must be able to orient itself and maintain focus despite turns, straight lines, and dead ends that prevent direct access to the tubes.

15.1 Site Specifics

The Rat-Byrinthe trial may take place indoors or outdoors. In both cases, no hay bales will be used.

15.2 Site specificities according to skill levels

15.2.1 Novice

15.2.1.1 Construction parameters

15.2.1.1.1 Enclosure dimensions (interior and exterior)

- 300 square feet
- Minimum of 10 feet in width

15.2.1.1.2 Equipment and materials

- 4 tubes
- 4 fence sections (metal or plastic), each with foldable V-shaped panels, 5 to 8 ft total length
- All fences must be at least 30 in high
- Sufficient space between sections for dogs and handlers to move freely
- 11 miscellaneous objects

15.2.1.2 Sex and quantity of rats

- 1 rat, male and/or female will be used. However, the choice of sex must remain the same throughout the competition to ensure fairplay to all competitors.

15.2.1.3 Placement of tube

- A total of 4 tubes will be used; one will contain the rat, the others will be clean and empty.
- All 15 objects (including the tubes) must be placed on the ground and spread throughout the enclosure.
 - Objects must not be dog toys, nor contain food

15.2.2 Advanced

15.2.2.1 Construction parameters

15.2.2.1.1 Enclosure dimensions (interior and exterior)

- 400 square feet
- Minimum of 10 feet in width

15.2.2.1.2 Equipment and materials

- 6 tubes
- 4 fence sections (metal or plastic), each with foldable V-shaped panels, 5 to 8 ft total length
- 1 fence section (metal or plastic) consisting of foldable panels arranged in zigzag or U-shape, 10 to 12 ft total length

- One fence may be against a wall to form a dead end
- All fences must be at least 30 in high
- Sufficient space between sections for dogs and handlers to move freely
- 16 miscellaneous objects
- 3 judge-selected toys
 - Toys must not squeak

15.2.2.2 Sex and quantity of rats

- 1 rat, male and/or female will be used. However, the choice of sex must remain the same throughout the competition to ensure fairplay to all competitors.

15.2.2.3 Placement of tube

- A total of 6 tubes will be used; one will contain the rat, three will have litter, the others will be clean and empty.
- All 25 objects (including tubes and toys) must be placed on the ground and spread throughout the enclosure.
 - Toys must be visible and accessible

15.2.3 Expert

15.2.3.1 Construction parameters

15.2.3.1.1 Enclosure dimensions (interior and exterior)

- 400 square feet
- Minimum of 10 feet in width

15.2.3.1.2 Equipment and materials

- 7 tubes
- Two fence sections, made of metal or plastic, each consisting of foldable panels arranged in a V-shape, with a total length of 5 to 8 feet.
- Two fence sections, made of metal or plastic, consisting of foldable panels arranged in a zigzag or U-shape, with a total length of 10 to 12 feet.
- Two fences, at least 5 feet each, placed against a wall to form a dead end.
- All fences must be at least 30 in high
- Sufficient space between sections for dogs and handlers to move freely
- 20 to 25 miscellaneous objects
- 3 judge-selected toys
 - Toys must not squeak

15.2.3.2 Sex and quantity of rats

- 2 rats, male and/or female will be used. However, the choice of sex must remain the same throughout the competition to ensure fairplay to all competitors.

15.2.3.3 Placement of tube

- A total of 7 tubes will be used; two will contain a rat, four will have litter, one will contain dog food/treats.

- All 30 to 35 objects (including tubes and toys) to be placed on the ground or elevated and spread throughout the enclosure.
 - Maximum object height = 24 inches
 - Elevated objects must be secured
 - Two of the objects will be perforated and contain dog food/treats. The selected objects must not allow the dog to access the food.
 - Toys must be visible and accessible

15.2.4 Champion

15.2.4.1 Construction parameters

15.2.4.1.1 Enclosure dimensions (interior and exterior)

- 400 square feet
- Minimum of 10 feet in width

15.2.4.1.2 Equipment and materials

- 9 tubes
- Two fence sections, made of metal or plastic, each consisting of foldable panels with a total length of 10 to 12 feet.
 - The fences will be arranged in parallel to form a corridor approximately 5 feet wide, dividing the enclosure into two sections, not necessarily of equal size.
 - Each fence will have one end touching a wall of the enclosure, placed opposite each other so that the entrance is at one end and the exit at the other end of the corridor.
 - The entrance must **not** be directly in front of the starting box.
- Two fence sections, made of metal or plastic, each consisting of foldable panels arranged in a zigzag shape, with a total length of 6 to 10 feet, forming separate dead ends along a wall of the enclosure.
 - At least one of the dead ends must be positioned in such a way that the dog is forced to take the corridor to reach it.
- All fences must be at least 30 in high
- Sufficient space between sections for dogs and handlers to move freely
- 20 to 30 miscellaneous objects
- 6 judge-selected toys
 - Toys can squeak

15.2.4.2 Sex and quantity of rats

- 2 rats, male and/or female will be used. However, the choice of sex must remain the same throughout the competition to ensure fairplay to all competitors.

15.2.4.3 Placement of tube

- A total of 9 tubes will be used; two (2) will contain a rat, four (4) will have litter and three (3) will contain human food.
- All objects (35-45, including tubes and toys) to be placed on the ground or elevated and spread throughout the enclosure.

- Maximum object height = 24 inches
- Elevated objects must be secured
- Two of the objects will be perforated and contain human food. The selected objects must not allow the dog to access the food
- Toys must be visible and accessible

15.3 Regulations for all levels

15.3.1 Start box

15.3.1.1 Placement

- The box must be inside the enclosure, close to the entrance
- No minimum distance from any object required

15.3.1.2 Dimensions

- 4 feet wide by 3 feet deep

15.3.2 Enclosure fence

- Wall or fence of 3 feet height minimum height
- Secured to ground to prevent dog from going under.

15.3.3 Tubes and objects

- Placement of the tube(s) with rat as mentioned in the specifics by levels
- Tubes used can be white, black or painted in different colors
- Tubes with rat must comply with regulation (length/size)
- Same set-up for all teams

15.3.4 Eligible dogs

- As stipulated in the General Rules and Regulations (section 5.2.4).
- Senior and/or disable dogs are welcome, but no additionnal time will be granted for their search and no special accommodations will be made for deaf and/or blind dogs.
- Dogs of all levels can participate in Rat-Byrinthe
- In a sanctionned trial, the dog must compete in its current level.
- A competing dog cannot do a For Exhibit Only (FEO) hunt and a sanctionned hunt in the same competition

15.3.5 Entering the ring

- As stipulated in the General Rules and Regulations (section 5.2.5).

15.3.6 Praise and rewards

- Upon confirmation by the judge that the rat has been found, verbal and physical encouragements will be permitted but no treats or toys (other than the juge selected toy) will be tolerated in the ring out of respect for the following teams.

15.3.7 Identifying the location of the rat(s)

- The handler is responsible for indicating to the judge that their dog has found the rat by clearly saying "RAT!" and/or raising their hand to stop the timer.
- If the wrong tube is identified or the dog fails to find the rat within the allotted search time, the team must immediately exit the ring.
- The handler may choose to stay on the mat without giving any cues to their dog or follow the dog and/or speak, which will incur point penalty.
- Under no circumstances may the handler touch the tubes, any objects, or their dog (except after a rat has been found).
- In Expert and Champion, at least one tube with rat will be hidden
- For levels with more than one rat, the clock stops as soon as a rat is found and resumes when the dog is released again.
 - If the dog finds another rat while the time is stopped, that find does not count. The handler must still bring their dog back to the designated area and wait for the judge's OK before releasing the dog to mark the next rat.
 - The handler is allowed to give a new verbal command when releasing the dog.
 - **Any loss of control of the dog while the located rat is being removed from the ring results in automatic disqualification.**
 - When the judge confirms that a rat has been found, the handler must:
 - For the Expert level, catch their dog and return to the starting box to wait while the identified tube is removed from the ring. The handler must wait for the judge's OK before releasing the dog to find the next rat.
 - No time penalty will be given if the handler leaves the box to retrieve their dog after a rat has been found.
 - For the Champion level:
 - If the handler had already left the start box, they must retrieve their dog and return to the box to wait while the identified tube is removed. The handler must wait for the judge's OK before releasing the dog.
 - If the handler remained in the start box (in silence), they must stay there and call their dog back. The dog must return immediately and directly (within approximately 3 seconds).
 - If the handler moves to retrieve the dog, a 35-point movement penalty will be applied.
 - If the dog does not return immediately and/or directly and the handler does not move to retrieve it within 5 seconds, the team will be automatically disqualified.
- Judges may stop and excuse the team in the ring at any time if they believe the safety of the rat(s) and/or the equipment is at risk.
- A judge may be inside the ring if they believe it is the best position for clearly observing the search.

15.3.8 Exiting the ring

- As stipulated in the General Rules and Regulations (section 5.2.8)

15.4 Scoring parameters for all levels

15.4.1 Qualifying score

The team will earn a qualifying score if the total time to find the rat(s), to the satisfaction of the judge, is within the following parameters:

- Novice
 - Time: 60 seconds
 - Minimum 120 points at Novice level is required to earn the title
 - 40 points if the handler stays in the start box without speaking while the dog works at a distance
 - 30 points if the handler moves or speaks after the dog leaves the box (10-point penalty)
- Advanced
 - Time: 70 seconds
 - Minimum 200 points at the Advanced level is required to earn the title
 - 50 points if the handler stays in the start box without speaking while the dog works at a distance
 - 40 points if the handler moves or speaks after the dog leaves the box (10-point penalty)
- Expert
 - Time: 80 seconds
 - Minimum 300 points at the Expert level is required to earn the title
 - 60 points if the handler stays in the start box without speaking while the dog works at a distance
 - 30 points if the handler moves or speaks after the dog leaves the box (30-point penalty)
- Champion
 - Time: 80 seconds
 - Minimum 420 points at the Champion level is required to earn the title
 - 70 points if the handler stays in the start box without speaking while the dog works at a distance
 - 35 points if the handler moves or speaks after the dog leaves the box (35-point penalty), including to retrieve the dog after a rat find
- Bronze, Silver, and Gold
 - A minimum of 200 additional Champion-level points is required to earn each title. (Bronze = 620 points, Silver = 820 points, and Gold = 1020 points)
 - 50 points if the handler stays in the start box without speaking while the dog works at a distance
 - 25 points if the handler moves or speaks after the dog leaves the box (25-point penalty), including to retrieve the dog after a rat find
- Except for the Champion Bronze, Silver and Gold levels, points do not carry over between levels

15.4.2 Non-qualifying score

- The team exceeds the time allowed to find the location of the rat(s)
- When a wrong tube is identified
- A handler who releases his dog before the judge's authorization (5-second penalty)

15.4.3 Disqualification

- **Handler intentionally allows the dog to shake or damage the tube/setup**
- **Loss of control of the dog while a rat is being removed**
- **Any unsportsmanlike conduct**
- **A dog that relieves itself within the search area.**
- **In Champion level, if the handler does not leave the start box (or takes too long – more than 5 seconds –) to retrieve their dog after a rat has been found, when the dog does not return immediately and directly after being recalled.**



16 Rat-Haut

This game introduces a new dimension to rat hunting sports, as all searches are conducted using horizontally suspended and secured tubes. The dog must adapt to the hanging tubes to indicate to its handler where the rat(s) are located.

16.1 Site Specifics

The Rat-Haut trial may take place indoors or outdoors under a shelter. In both cases, no hay bales will be used.

16.2 Site specificities according to skill levels

16.2.1 Novice

16.2.1.1 Construction parameters

16.2.1.1.1 Enclosure dimensions (interior and exterior)

- 300 square feet
- Minimum of 10 feet in width

16.2.1.1.2 Equipment and materials

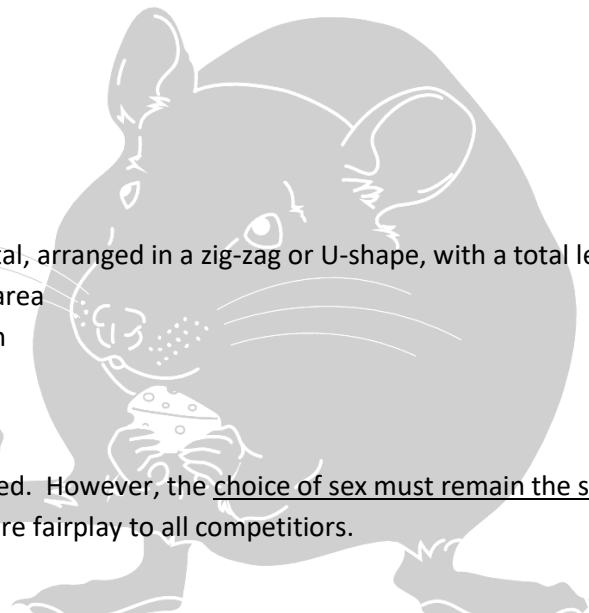
- 10 tubes
 - Colored tubes allowed
- 1 fence section, ideally made of metal, arranged in a zig-zag or U-shape, with a total length of 10 to 12 ft in the middle of the search area
- All fences must be at least 30 in high
- 20 non-elastic straps or fasteners

16.2.1.2 Sex and quantity of rats

- 1 rat, male and/or female will be used. However, the choice of sex must remain the same throughout the competition to ensure fairplay to all competitors.

16.2.1.3 Placement of tube

- A total of 10 tubes will be used; one will contain the rat, four will contain litter and the others will be clean and empty.
- All tubes must be horizontally suspended at various heights. Lowest point of any tubes must be at 12 inches minimum from the ground and at a maximum of 30 inches
- It is allowed to place two tubes one on top of the other
- Each tube must be held by 2 straps
- Tubes must be distributed across at least two surfaces, which may include:
 - Both sides of the central fence
 - Two of the enclosure's walls/fences
 - A combination of both



16.2.2 Advanced

16.2.2.1 Construction parameters

16.2.2.1.1 Enclosure dimensions (interior and exterior)

- 400 square feet
- Minimum of 10 feet in width

16.2.2.1.2 Equipment and materials

- 13 tubes
 - Colored tubes allowed
- 2 fence sections, ideally made of metal, arranged in a zig-zag, U-shape or circle, with a total length of 10 to 12 ft in the middle of the search area
- All fences must be at least 30 in high
- Non-elastic straps or fasteners
- 3 judge-selected toys
 - Toys must not squeak

16.2.2.2 Sex and quantity of rats

- 1 rat, male and/or female will be used. However, the choice of sex must remain the same throughout the competition to ensure fairplay to all competitors.

16.2.2.3 Placement of tube

- A total of 13 tubes will be used; one will contain the rat, 8 will have litter, the others will be clean and empty.
- All tubes must be horizontally suspended at various heights. Lowest point of any tubes must be at 12 inches minimum from the ground and at a maximum of 30 inches
- It is allowed to place two tubes or one tube and a toy, one above the other
- Each tube must be held by 2 straps
- Tubes must be distributed across at least 4 distinct surfaces, which may include:
 - Both sides of the central fences
 - Four enclosure's walls/fences
 - A combination of both
- Toys must also be suspended

16.2.3 Expert

16.2.3.1 Construction parameters

16.2.3.1.1 Enclosure dimensions (interior and exterior)

- 400 square feet
- Minimum of 10 feet in width

16.2.3.1.2 Equipment and materials

- 13 tubes
 - Colored tubes allowed

- Three fence sections, ideally made of metal, arranged in a zigzag, U-shape, or circular shape, with a total length of 10 to 12 feet, installed in the center of the enclosure.
- All fences must be at least 30 in high
- Non-elastic straps or fasteners
- 6 judge-selected toys
 - Toys must not squeak

16.2.3.2 Sex and quantity of rats

- 2 rats, male and/or female will be used. However, the choice of sex must remain the same throughout the competition to ensure fairplay to all competitors.

16.2.3.3 Placement of tube

- A total of 13 tubes will be used; two (2) will contain a rat, 8 will have litter, the others will be clean and empty
- All tubes must be horizontally suspended at various heights. Lowest point of any tubes must be at 12 inches minimum from the ground and at a maximum of 30 inches
- It is allowed to place two tubes or one tube and a toy, one above the other
- Each tube must be held by 2 straps
- Tubes must be distributed across at least six (6) distinct surfaces, which may include:
 - Both sides of the central fences
 - A combination of central fences and enclosure walls/fences.
- Toys must also be suspended

16.2.4 Champion

16.2.4.1 Construction parameters

16.2.4.1.1 Enclosure dimensions (interior and exterior)

- 400 square feet
- Minimum of 10 feet in width

16.2.4.1.2 Equipment and materials

- 15 tubes
 - Colored tubes allowed
- Three fence sections, ideally made of metal, arranged in a zigzag, U-shape, or circular shape, with a total length of 10 to 12 feet, installed in the center of the enclosure
- All fences must be at least 30 in high
- It is allowed to place two tubes or one tube and a toy, one above the other
- Non-elastic straps or fasteners
- 6 judge-selected toys
 - Toys can squeak

16.2.4.2 Sex and quantity of rats

- 2 rats, male and/or female will be used. However, the choice of sex must remain the same throughout the competition to ensure fairplay to all competitors.

16.2.4.3 Placement of tube

- A total of 15 tubes will be used; two (2) will contain a rat, two (2) will have dog food/treats, 8 will have litter, the others will be clean and empty
- All tubes must be horizontally suspended at various heights. Lowest point of any tubes must be at 12 inches minimum from the ground and at a maximum of 30 inches
- It is allowed to place two tubes one on top of the other
- Each tube must be held by 2 straps
- Tubes must be distributed across at least six (6) distinct surfaces, which may include:
 - Both sides of the central fences
 - A combination of central fences and enclosure walls/fences.
- Toys must also be suspended

16.2.5 Excellent

16.2.5.1 Construction parameters

16.2.5.1.1 Enclosure dimensions (interior and exterior)

- 400 square feet
- Minimum of 10 feet in width

16.2.5.1.2 Equipment and materials

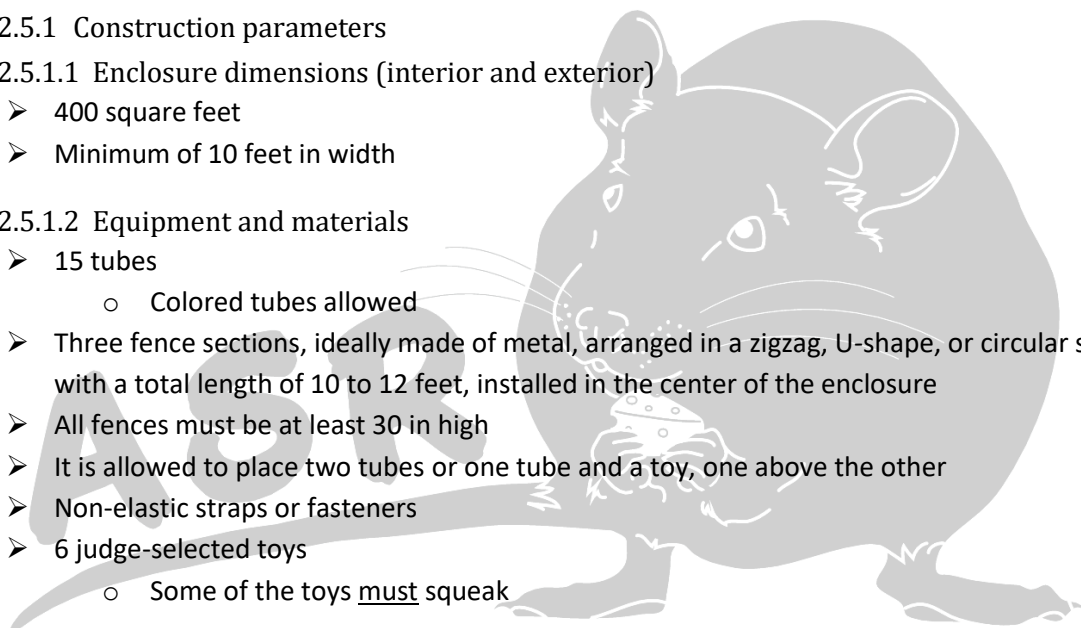
- 15 tubes
 - Colored tubes allowed
- Three fence sections, ideally made of metal, arranged in a zigzag, U-shape, or circular shape, with a total length of 10 to 12 feet, installed in the center of the enclosure
- All fences must be at least 30 in high
- It is allowed to place two tubes or one tube and a toy, one above the other
- Non-elastic straps or fasteners
- 6 judge-selected toys
 - Some of the toys must squeak

16.2.5.2 Sex and quantity of rats

- 2 rats, male and/or female will be used. However, the choice of sex must remain the same throughout the competition to ensure fairplay to all competitors.

16.2.5.3 Placement of tube

- A total of 15 tubes will be used; two (2) will contain a rat, two (2) will have dog food/treats and/or human food, 8 will have litter, the others will be clean and empty
- All tubes must be horizontally suspended at various heights. Lowest point of any tubes must be at 12 inches minimum from the ground and at a maximum of 30 inches
- It is allowed to place two tubes one on top of the other
- Each tube must be held by 2 straps
- Tubes must be distributed across at least six (6) distinct surfaces, which may include:
 - Both sides of the central fences



- A combination of central fences and enclosure walls/fences.

- Toys must also be suspended

16.3 Regulations for all levels

16.3.1 Start box

16.3.1.1 Placement

- The box must be inside the enclosure, close to the entrance
- Minimum 5 ft from the search area

16.3.1.2 Dimensions

- 4 feet wide by 3 feet deep

16.3.2 Enclosure fence

- Wall or fence of 3 feet height minimum height
- Secured to ground to prevent dog from going under.

16.3.3 Tubes and objects

- Placement of the tube(s) and toys as mentioned in the specifics by levels
- Tubes used can be white, black or painted in different colors
- Tubes with rat must comply with regulation (length/size)
- Same set-up for all teams

16.3.4 Eligible dogs

- As stipulated in the General Rules and Regulations (section 5.2.4).
- Senior and disable dogs are welcome, but no additionnal time will be granted for their search and no special accommodations will be made for deaf and/or blind dogs.
- Dogs of all levels can participate in Rat-Haut
- In a sanctionned trial, the dog must compete in its current level.
- A competing dog cannot do a For Exhibit Only (FEO) hunt and a sanctionned hunt in the same competition

16.3.5 Entering the ring

- As stipulated in the General Rules and Regulations (section 5.2.5).

16.3.6 Praise and rewards

- Upon confirmation by the judge that the rat has been found, verbal and physical encouragements will be permitted but no treats or toys (other than the juge selected toy) will be tolerated in the ring out of respect for the following teams.

16.3.7 Identifying the location of the rat(s)

- The handler is responsible for indicating to the judge that their dog has found the rat by clearly saying "RAT!" and/or raising their hand to stop the timer.

- If the wrong tube is identified or the dog fails to find the rat within the allotted search time, the team must immediately exit the ring.
- To ensure safety of the rat(s) and dog, the handler must move with their dog to be able to intervene quickly if the dog's intensity risks toppling the fence. In such case, the handler is allowed and expected to hold the fence, but under no circumstances is the handler allowed to touch the tubes, toys, or the dog, under penalty of elimination.
- In Expert and Champion levels, since there is more than one rat to find, after confirmation that the rat is indeed in the identified tube, the handler must catch their dog and bring it back to the start box while the identified tube is removed from the enclosure. The handler must wait for the judge's OK before releasing their dog to search for the next rat.
 - Time stops as soon as a rat is found and resumes when the dog is released again.
 - If the dog finds another rat while the time is stopped, that find does not count. The handler must still bring their dog back to the designated area and wait for the judge's OK before releasing the dog to mark the next rat.
 - **Any loss of control of the dog while the located rat is being removed from the ring results in automatic disqualification.**
- For the Excellent level, the first rat found remains in place while the dog continues searching. The handler may not deliberately block access to the tube in order to force the dog to find the other rat.
- Throughout the search, the handler may talk to their dog and point to the tubes, but must not touch the dog or the tubes.
- Judges may stop and excuse the team in the ring at any time if they believe the safety of the rat(s) and/or the equipment is at risk.
- A judge may be inside the ring if they believe it is the best position for clearly observing the search.

16.3.8 Exiting the ring

- As stipulated in the General Rules and Regulations (section 5.2.8)

16.4 Scoring parameters for all levels

16.4.1 Qualifying score

The team will earn a qualifying score if the total time to find the rat(s), to the satisfaction of the judge, is within the following parameters:

- Novice
 - Time: 50 seconds
 - Minimum 300 points required to earn the Novice title
 - Rat found under 30 seconds = 100 points
 - Rat found in 30 seconds or more = 50 points
- Advanced
 - Time: 60 seconds
 - Minimum 400 points at the Advanced level is required to earn the title

- Rat found under 30 seconds = 100 points
 - Rat found in 30 seconds or more = 50 points
 - Expert
 - Time: 60 seconds
 - Minimum 400 points at the Expert level is required to earn the title
 - Rat found under 30 seconds = 100 points
 - Rat found in 30 seconds or more = 50 points
 - Champion
 - Time: 75 secondes
 - Minimum 500 points at the Champion level is required to earn the title
 - Rat found under 30 seconds = 100 points
 - Rat found in 30 seconds or more = 50 points
 - Excellent
 - Time: 90 secondes
 - Minimum 500 points at the Excellent level is required to earn the title
 - Rat found under 40 seconds = 100 points
 - Rat found in 40 seconds or more = 50 points
 - Bronze, Silver, and Gold
 - A minimum of 500 additional Excellent-level points is required to earn each title. (Bronze = 1000 points, Silver = 1500 points, and Gold = 2000 points)
 - Rat found under 40 seconds = 100 points
 - Rat found in 40 seconds or more = 50 points
 - Except for the Excellent Bronze, Silver and Gold levels, points do not carry over between levels
- 16.4.2 Non-qualifying score
- The team exceeds the time allowed to find the location of the rat(s)
 - When a wrong tube is identified
 - A handler who releases his dog before the judge's authorization (5-second penalty)

16.4.3 Disqualification

- **Handler intentionally allows the dog to shake or damage the tube/setup**
- **Handler who does not intervene promptly to ensure the safety of the rat(s)**
- **Loss of control of the dog while a rat is being removed**
- **Any unsportsmanlike conduct**
- **A dog that relieves itself within the search area.**